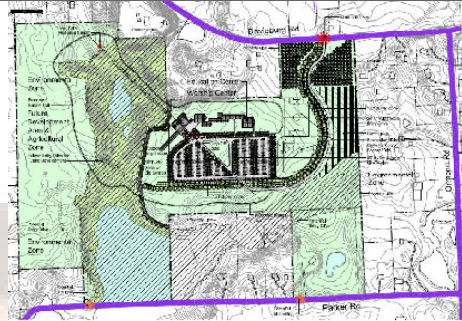


DIVINE MERCY PARISH
Continuing Our Journey



Master Plan and Land Use Study Complete

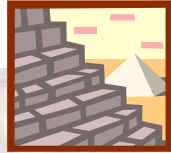


- ✓ Report Sent to Archdiocese.
- ✓ Presentation to AoD Board of Consultors on September 18, 2007

Thank You Master Planning Committee
For a Job Well Done



What Are Our Next Steps?



- Establish 2 New Focus Groups
 - Property Development Group
 - Liturgical Exploration Group

Talking points

- Groups will start organizing and task execution after Labor Day
- Groups will meet as necessary over the next few months.
- Goal will be to complete tasks before Christmas.

Property Development Group

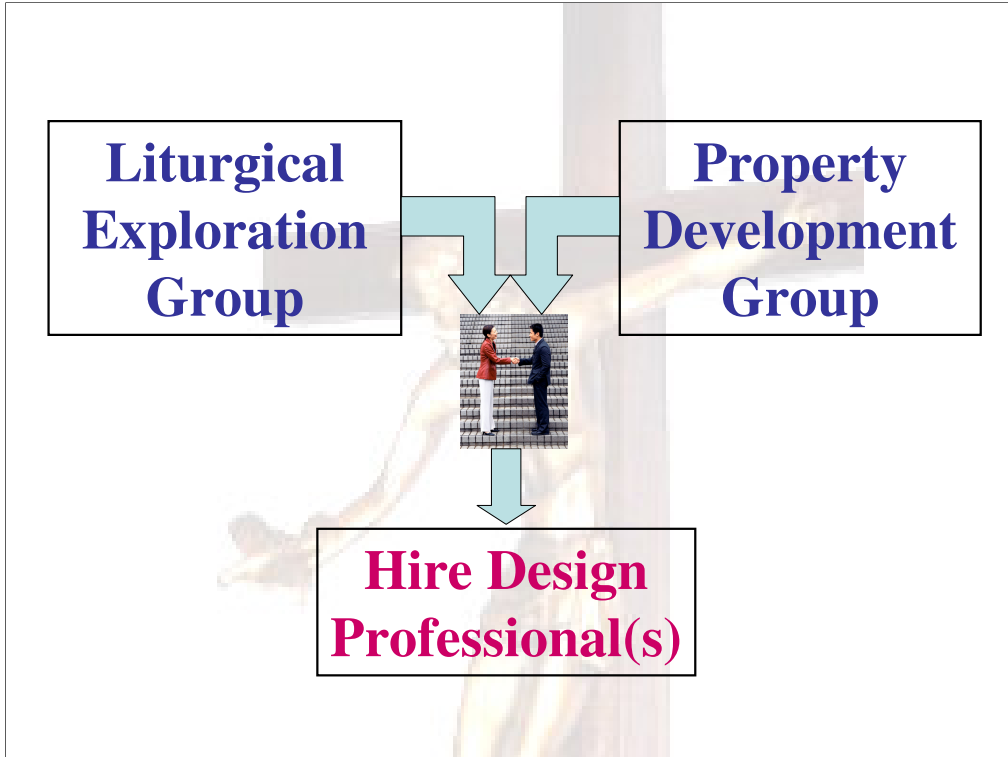
- Tasks
 - Obtain necessary land surveys
 - Evaluate design and construction approaches.
 - Identify Design / Construction major Steps
 - Investigate potential Design Professionals.
Work closely with the Liturgical Exploratory Group (LEG) during investigation
 - Jointly with LEG hire Design Professionals

Liturgical Exploration Group

- Tasks
 - Select Liturgical Consultant
 - Review Liturgical Documents on Worship Space (e.g. Built of Living Stone, GIRM Chapter 5, and earlier similar Church documents).
 - Visit existing Worship Spaces
 - Educate Community
 - Establish Design Criteria and jointly with the Property Development Group hire Design Professionals

Talking points

- Liturgical Consultant
 - oversee the dialogue between architect and parish
 - ensuring that the right questions get asked which will lead to design choices that best serve the worshipping assembly
 - help parishioners identify key characteristics desired for worship areas.
- Select Liturgical Consultant by
 - developing roles & responsibilities
 - identifying method and type of contract
 - obtaining quotes and interviewing prospects



Your Role

- We are asking each of you to pray and reflect on joining one of these groups
- Sign-up will be after Mass this week and before and after Mass next week
- Please join us as we continue toward a new worship space.